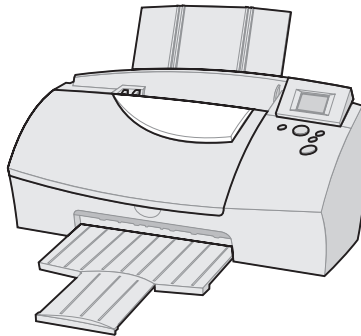


# KODAK Personal Picture Maker 200

## Quick Start



[www.kodak.com](http://www.kodak.com)

**Edition: August 2000**

**The following paragraph does not apply to any country where such provisions are inconsistent with local law:** LEXMARK PROVIDES THIS PUBLICATION "AS IS" WITHOUT WARRANTY OF ANY KIND, EITHER EXPRESS OR IMPLIED, INCLUDING, BUT NOT LIMITED TO, THE IMPLIED WARRANTIES OF MERCHANTABILITY OR FITNESS FOR A PARTICULAR PURPOSE. Some states do not allow disclaimer of express or implied warranties in certain transactions; therefore, this statement may not apply to you.

This publication could include technical inaccuracies or typographical errors. Changes are periodically made to the information herein; these changes will be incorporated in later editions. Improvements or changes in the products or the programs described may be made at any time.

Comments about this publication may be addressed to Lexmark International, Inc., Department F95/032-2, 740 West New Circle Road, Lexington, Kentucky 40550, U.S.A. In the United Kingdom and Eire, send to Lexmark International Ltd., Marketing and Services Department, Westhorpe House, Westhorpe, Marlow Bucks SL7 3RQ. Lexmark may use or distribute any of the information you supply in any way it believes appropriate without incurring any obligation to you. You can purchase additional copies of publications related to this product by calling 1-800-553-9727. In the United Kingdom and Eire, call 0628-481500. In other countries, contact your point of purchase.

References in this publication to products, programs, or services do not imply that the manufacturer intends to make these available in all countries in which it operates. Any reference to a product, program, or service is not intended to state or imply that only that product, program, or service may be used. Any functionally equivalent product, program, or service that does not infringe any existing intellectual property right may be used instead. Evaluation and verification of operation in conjunction with other products, programs, or services, except those expressly designated by the manufacturer, are the user's responsibility.

Lexmark and Lexmark with diamond design are trademarks of Lexmark International, Inc., registered in the United States and/or other countries.

Kodak is a trademark of Eastman Kodak Company.

Other trademarks are the property of their respective owners.

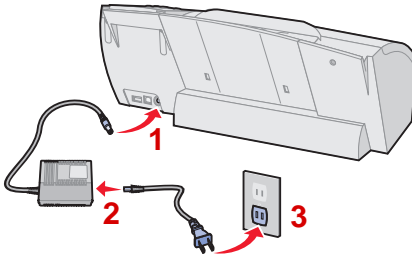
**© Eastman Kodak Company 2000 and © Lexmark International, Inc. 2000 All rights reserved.**

#### **UNITED STATES GOVERNMENT RESTRICTED RIGHTS**

This software and documentation are provided with RESTRICTED RIGHTS. Use, duplication or disclosure by the Government is subject to restrictions as set forth in subparagraph (c)(1)(ii) of the Rights in Technical Data and Computer Software clause at DFARS 252.227-7013 and in applicable FAR provisions: Lexmark International, Inc., Lexington, KY 40550.

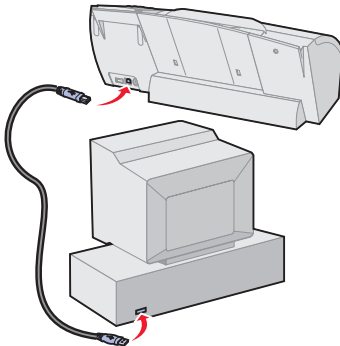
## Quick setup

- 1 Connect the power supply



**NOTE:** Step 2 is not required in the United States and Japan.

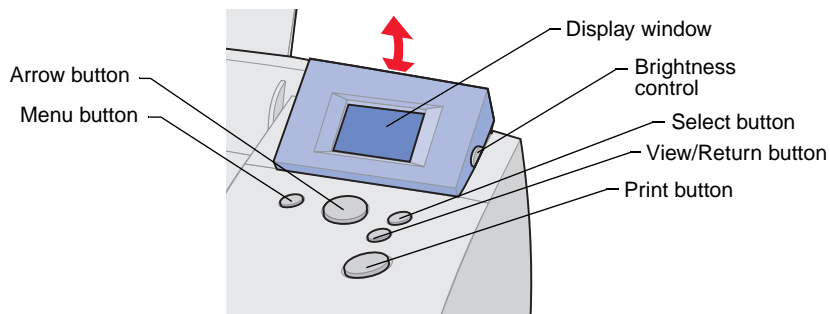
- 2 From the operator panel, select default settings for the following items. For help using the operator panel, see page 4.
  - Language
  - Page size
- 3 Install the print cartridges. For help, see page 5.
- 4 Load paper. For help, see page 6.
- 5 Align the print cartridges. For help, refer to your *User's Guide*.
- 6 To print from your computer, connect the USB cable to your printer, and then to your computer.



- 7 Install printer software.

For more information on setting up or using your printer with a computer, refer to your *User's Guide*.

## Using the operator panel

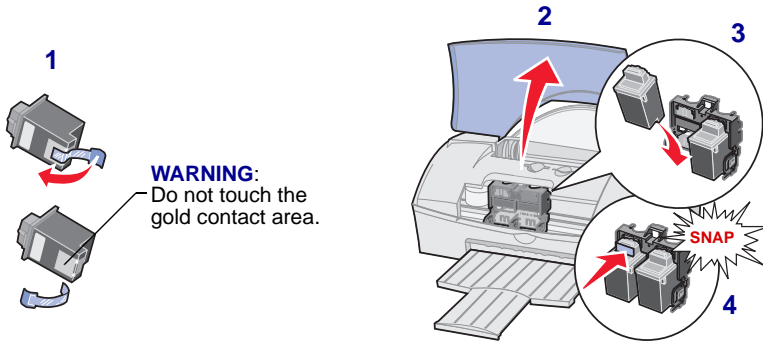


Use this...	When you want to...
Menu button	Enter and leave the menus.
Arrow button	Navigate through the menus, and view photos.
Display window	Raise the display to view the menus and photos.
Brightness control	Adjust the brightness or contrast of the display.
Select button	Select or deselect a photo, enter a submenu, or accept menu settings.
View/Return button	Change from one standard view to another, or return to a previous menu level without saving changes from the current menu option.
Print button	Begin printing.

---

## Installing the print cartridges

Complete the following steps when inserting the print cartridges in your printer. Make sure to match the cartridge cap color to the cartridge carrier color.



---

## Printing photos

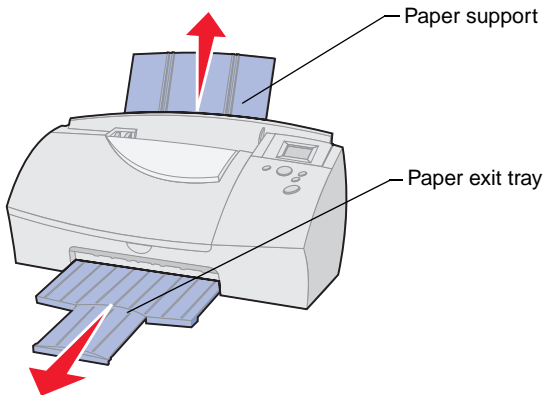
- 1** Load photo paper.
- 2** Insert camera card.
- 3** Select print settings.
- 4** Press **Print**.

**Important!** For best print quality, we recommend KODAK Premium Picture Paper.

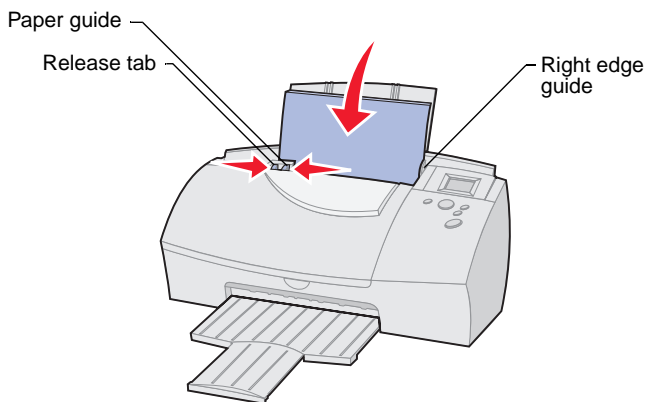
## Loading paper

You can load up to 25 sheets of KODAK Premium Picture Paper.

- 1 Pull out the paper support and paper exit tray.



- 2 Insert paper into the sheet feeder, glossy side up (for photo paper). Make sure it is lined up with the right edge guide.



- 3 Squeeze the release tab and the paper guide together, and then slide the paper guide to the left edge of the paper.

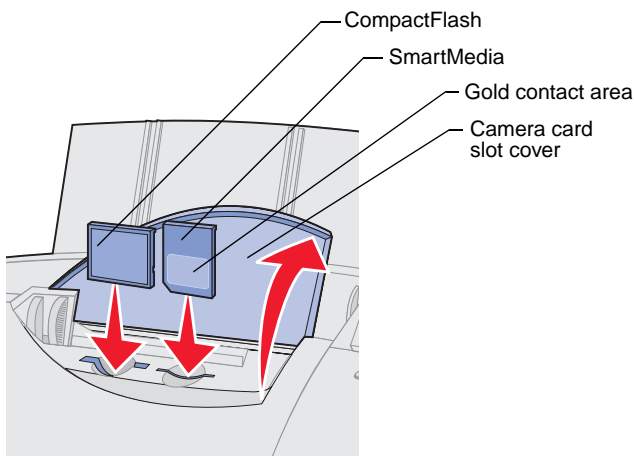
## Inserting a camera card

You can insert a CompactFlash or SmartMedia camera card into your printer. Before inserting a camera card into its card slot, lift the protective cover located on the top of your printer.

### Choosing a camera card slot

Your printer recognizes one source for photos at a time and searches for photos in the following order:

- Left slot (CompactFlash)
- Right slot (SmartMedia)
- Optional external devices.



Consider the following information before inserting a camera card:

- If the camera card has a gold contact area, make sure the contact area faces the front of your printer.
- If you are inserting a CompactFlash card, make sure the name label faces the back of your printer.
- If your camera card or storage disk contains photo images, a **Reading Camera Card** message appears in the display window. The number of photos contained on the card is also displayed.

© Eastman Kodak Company 2000 and  
© Lexmark International, Inc. 2000 All rights reserved.

Printed in U.S.A.

This document is printed on recycled paper. 8/00

E.C. 6B0002



P/N 16B0122